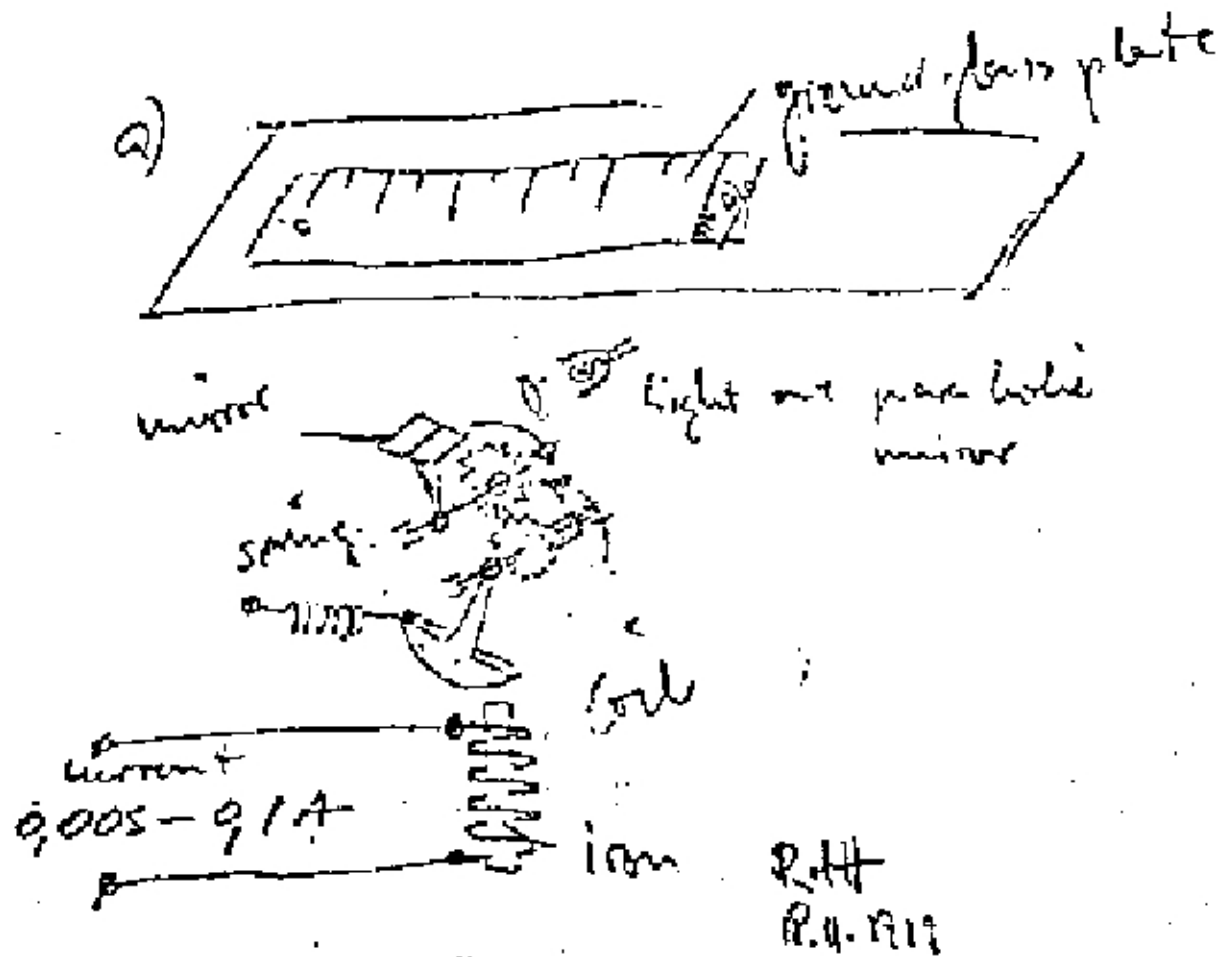
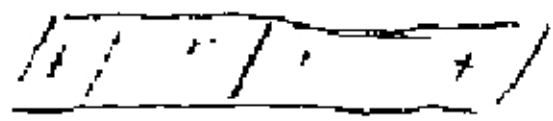


ask Mr. Fuller for model!

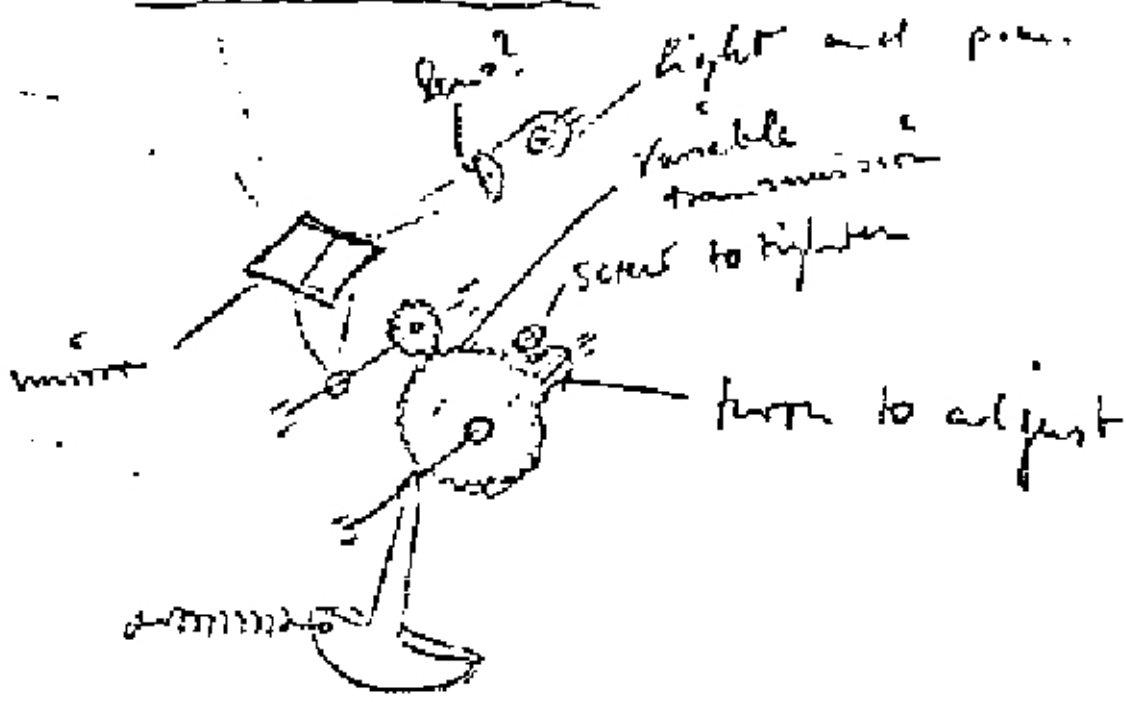


to indicate
process value

b)



ground of glass y test

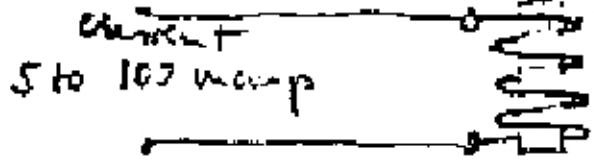


note down!
Prof. Kilroy was here
(1924)

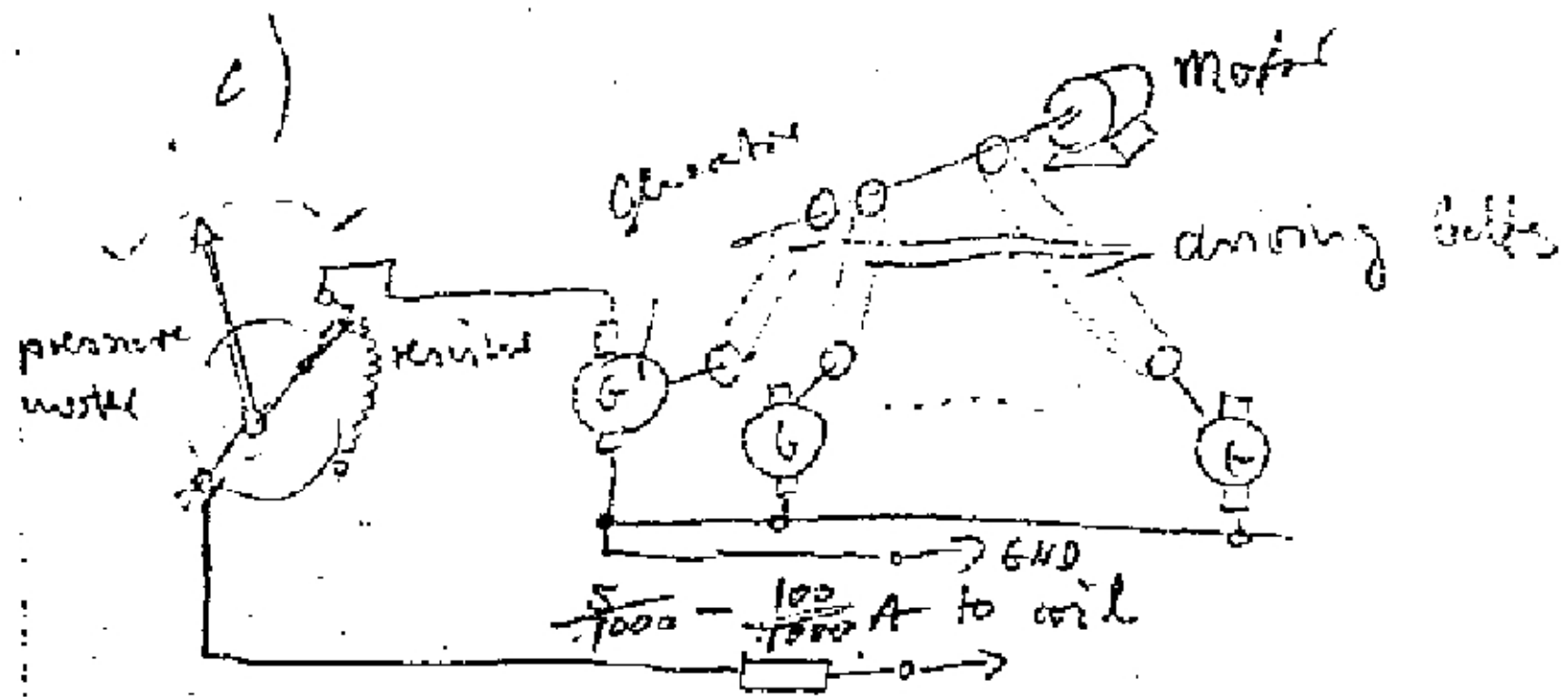


Full technology: use plan two channels.

9.2.0

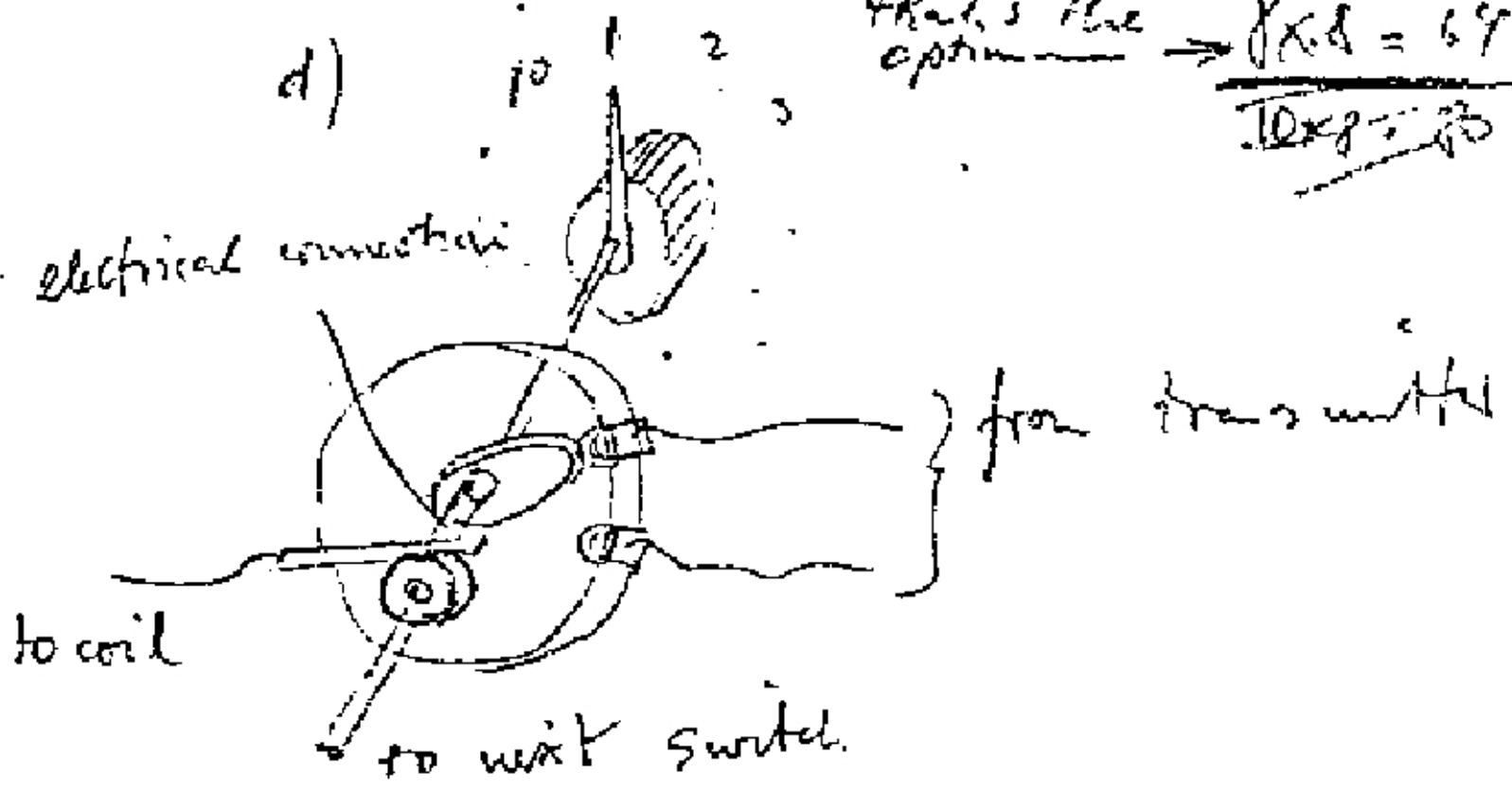


to indicate control current operation



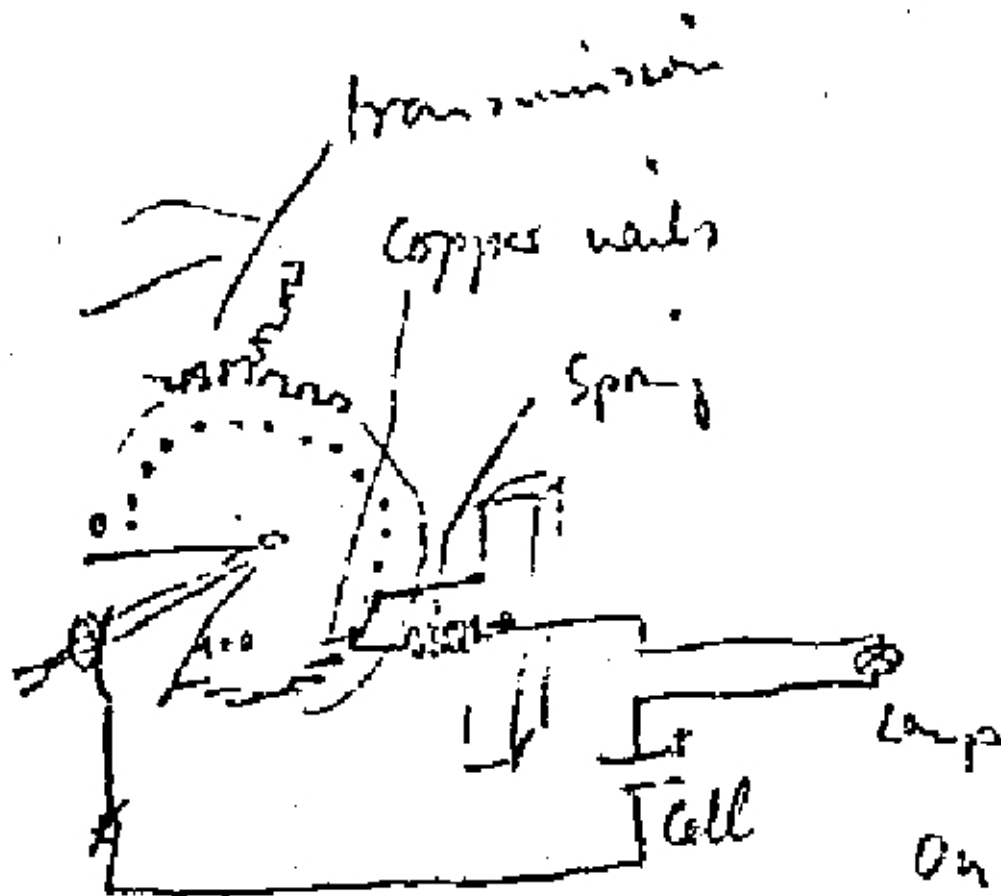
flow
 from a motor: pressure to current level

I think
that's the
optimum $\rightarrow \frac{R_{cd} = 69}{10 \times 8 = 80}$



disc-switch for up to ten positions
value indicators set one disc.

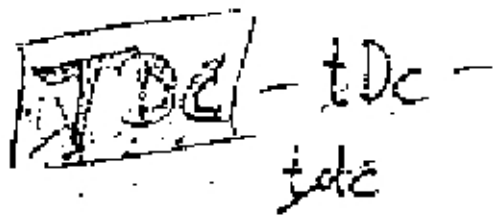
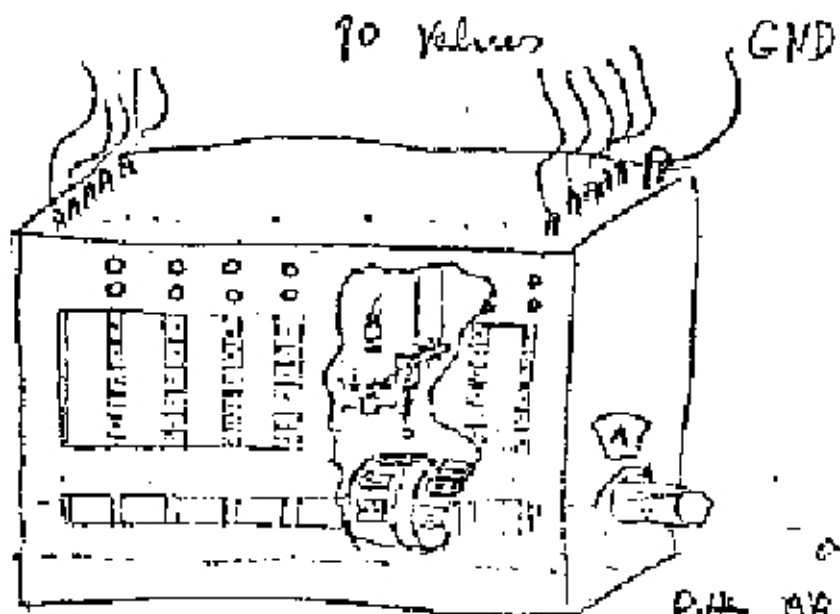
e)



Thomson
S.P. 16
K.S. 4
Ran 16

On = Limit violated

Limit - indicator (shown:
one for high, one for low)



Visual panel
for a terminal directed
control (TDC)

on the same shaft as disc - switch

8 x 10 process value indicator
(visual panel)

Rotary switch
(the same for direction)